

## lacquer laccature



L1  
sky blue  
azzurro cielo



L2  
mint green  
verde menta



L3  
petrol green  
verde petrolio



L4  
brick red  
rosso mattone



L5  
powder pink  
rosa cipria



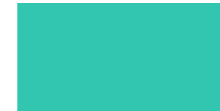
L6  
grey white  
bianco grigio



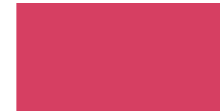
L7  
yellow  
giallo



L8  
blue  
blu



L9  
cockatoo green  
verde cockatoo



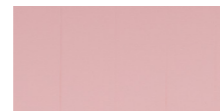
L10  
calypso  
calypso



L11  
sage green  
verde salvia



L12  
antique pink  
rosa antico



L13  
candy pink  
rosa caramella



L14  
gold painted  
laccato oro



L15  
cobalt blue  
blu cobalto

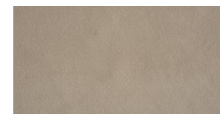
## fabrics tessuti



T11  
Serica damask  
damascato Serica



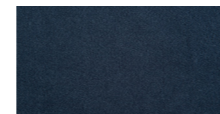
V1  
red velvet  
velluto rosso



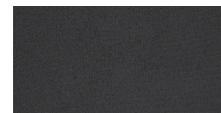
V2  
beige velvet  
velluto beige/sabbia



V3  
green velvet  
velluto verde



V4  
blue velvet  
velluto blu



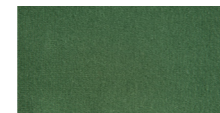
V5  
anthracite/grey velvet  
velluto grigio/antracite



C1  
red cotton  
cotone rosso



C2  
beige cotton  
cotone beige/sabbia



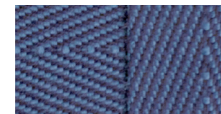
C3  
green cotton  
cotone verde



C4  
blue cotton  
cotone blu



C5  
anthracite/grey cotton  
cotone antracite



C6  
Blue rigid grosgrain ribbon  
nastro rigido grosgrain blu



C7  
Ecru rigid grosgrain ribbon  
nastro rigido grosgrain ecru

## lacquered metal structures strutture metalliche laccate



I1  
red  
rosso



I2  
black  
nero



I3  
grey  
grigio



I4  
ruby red  
rosso rubino



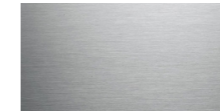
I5  
matt black painted iron  
ferro verniciato nero opaco

MEDULUM

## metals metalli



M1  
satin finish brass  
ottone satinato



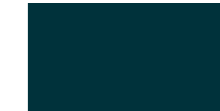
M2  
satin finish stainless steel  
inox satinato



M3  
polished brass  
ottone lucido



M4  
polished brass-plated steel  
acciaio ottonato lucido



M5  
green inox  
acciaio verde



M6  
mirror-polished steel  
acciaio lucidato a specchio



M7  
chromed iron  
ferro cromato

## glass vetro



G1  
blue  
blu



G2  
extraclear  
extrachiaro

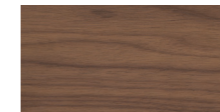


G3  
acrylic mirror  
specchio in acrilico

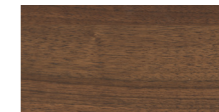
## wood legno



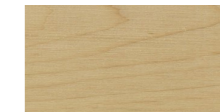
O1  
oak  
rovere



O2  
canaletto walnut  
noce canaletto



O3  
Italian walnut  
noce nazionale



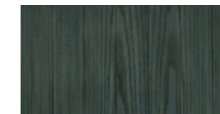
O4  
basswood  
tiglio



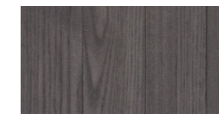
O5  
Alpi erable  
Alpi erable



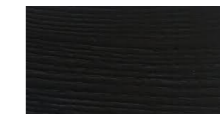
O6  
Alpi Walnut Burl  
Alpi Walnut Burl



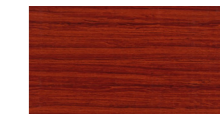
O7  
green ash tree  
verde frassino



O8  
black ash tree  
nero frassino



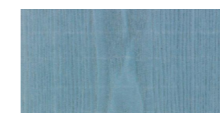
O9  
black painted open-pore ash  
frassino laccato nero poro aperto



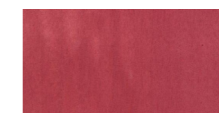
O10  
mahogany  
mogano



PO1  
red caleidolegno  
caleidolegno rosso



PO1.in  
ash tree blu  
frassino tinto blu



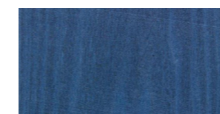
PO1.out  
red tanganyka  
tanganyka tinto rosso



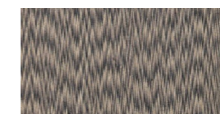
PO2  
blu caleidolegno  
caleidolegno blu



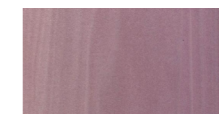
PO2.in  
ash tree yellow  
frassino tinto giallo



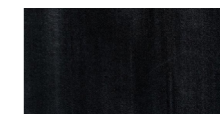
PO2.out  
blu tanganyka  
tanganyka tinto blu



PO3  
black caleidolegno  
caleidolegno nero



PO3.in  
ash tree light purple  
frassino tinto viola



PO3.out  
black tanganyka  
tanganyka tinto nero

MEDULUM